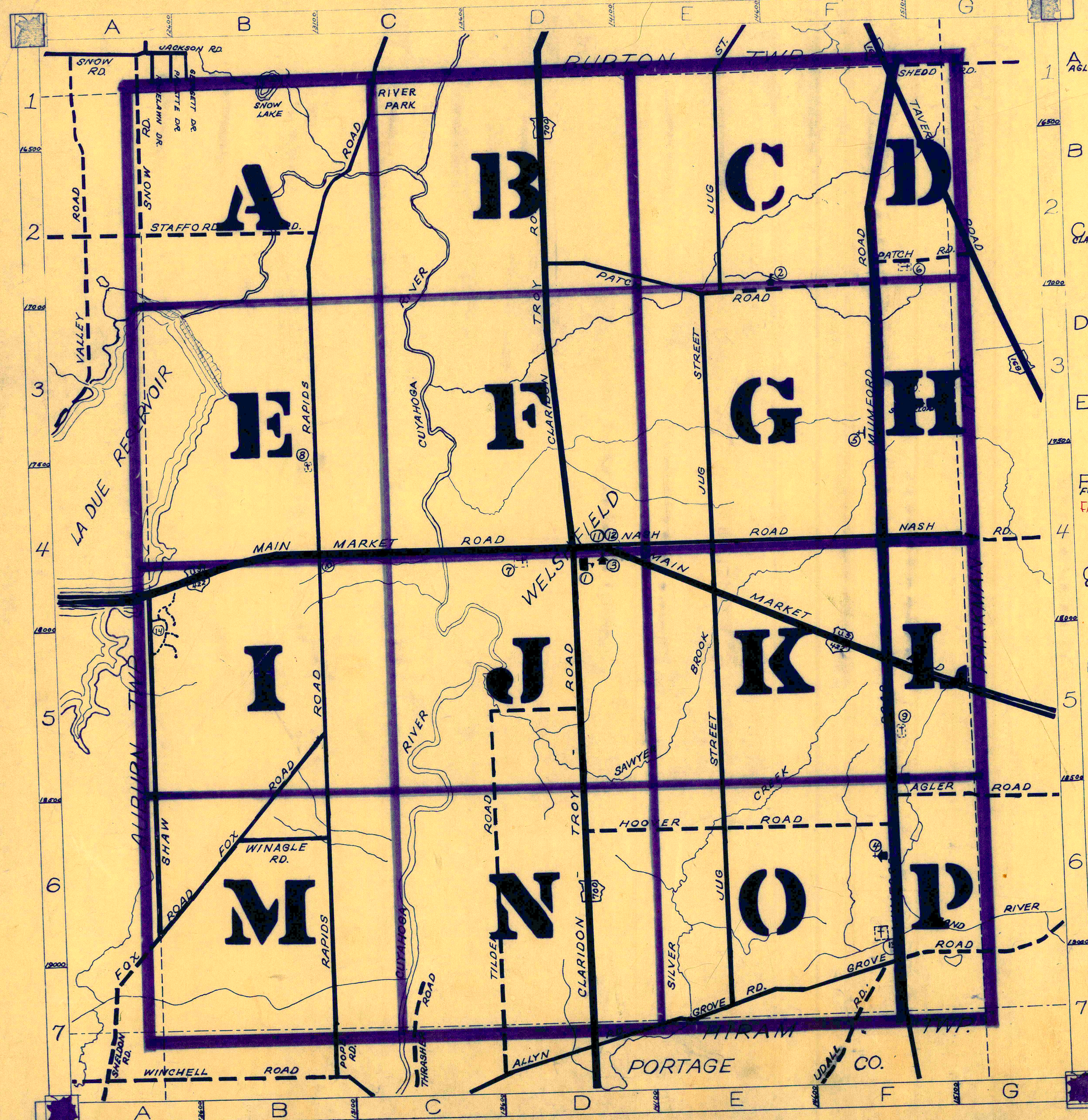


ROAD INDEX



A	AGLER RD. F6-G6	J cont.	S cont.
B		K KIMPTON TR - map J	
C	CLARIDON TROY RD. D1-D7	L	T TAVERN RD. F1-G3 THRASHER RD. C7 TILDEN RD. D6-D7
D		M MAIN MARKET RD. A4-B5 MUMFORD RD. F1-F7	U UDALL RD. F7
E		N NASH RD. D4-G4	V
F	FOX RD. A7-B5 FALLEN OAKS TR - map J	O	W WINAGLE RD. B6
G	GROVE RD. E7-G6	P PATCH RD. D2-B2	X
		Q	Y
		R RAPIDS RD. C1-B7	Z
		S SHAW RD. A4-A6 SHEDD RD. F1-G1 SNOW RD. A1-A2 STAFFORD RD. A2-B2	

- ① TROY ELEMENTARY SCHOOL
- ② AMISH SCHOOL
- ③ TROY CONGREGATIONAL CH.
- ④ TROY BAPTIST CHURCH
- ⑤ SHRINE OF OUR LADY OF MARIPOSA
- ⑥ BURROUGHS CEMETERY
- ⑦ TROY CEMETERY
- ⑧ PATCH CEMETERY
- ⑨ MUMFORD CEMETERY
- ⑩ POPE HOME
- ⑪ TROY COMMUNITY HOUSE
- ⑫ TROY VOL. FIRE DEPT.
- ⑬ GROVE CEMETERY
- ⑭ TROY OAKS TRAILER

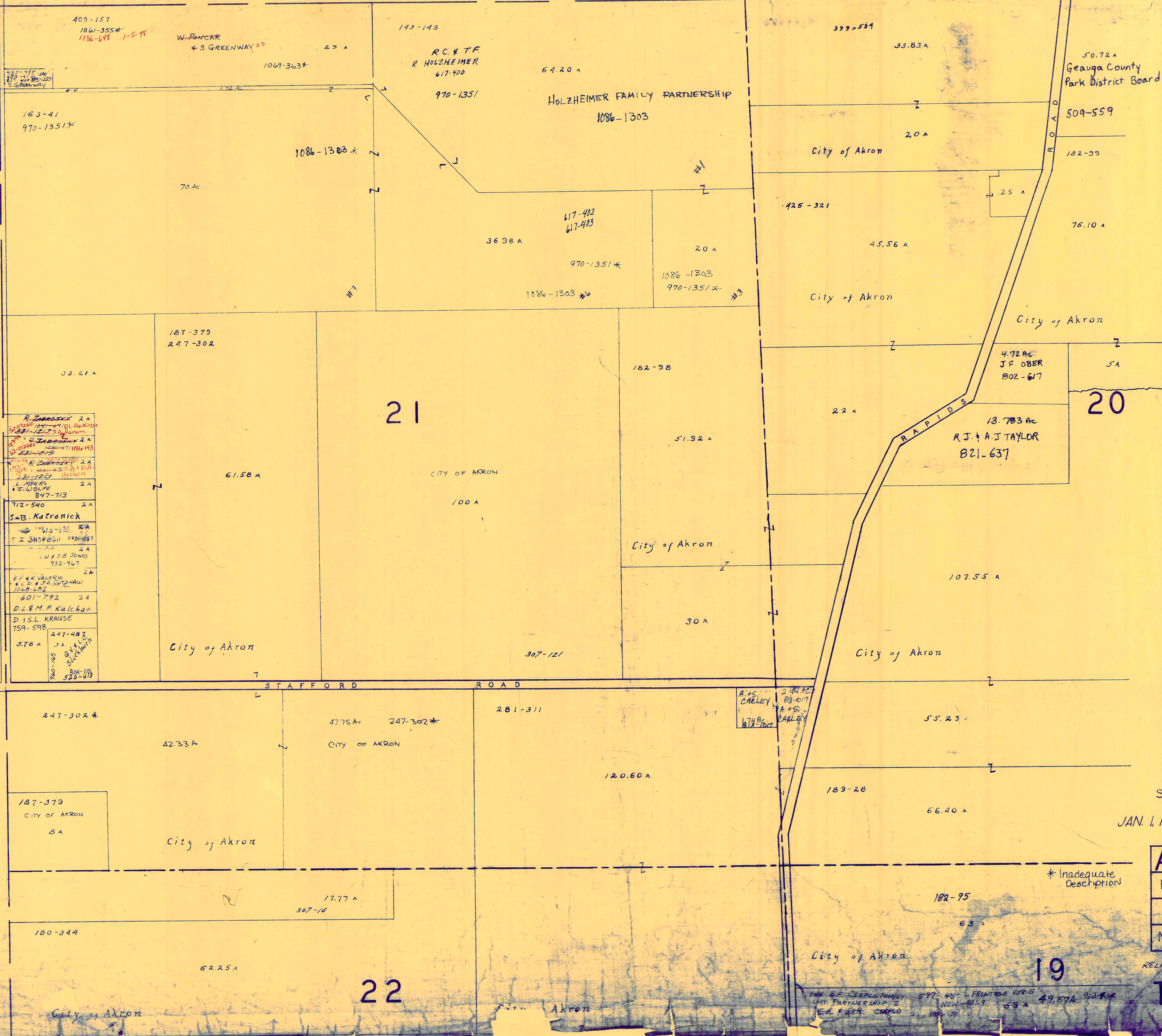
TROY TOWNSHIP

SCALE: 1"=2000'
 ROBERT L. PHILLIPS
 BEAUGA COUNTY ENGINEER

--- UNPAVED ROADS
 --- PAVED ROADS
 --- TOWNSHIP LINE
 --- COUNTY LINE

BURTON TOWNSHIP

TOWNSHIP
SNOW ROAD
BURTON



SCALE 1" = 300'

JAN. 1, 1998

A	B	C	D
E	F	G	H
I	J	K	L
M	N	O	P

RELATIVE REPRESENTATION

* Inadequate Description

19

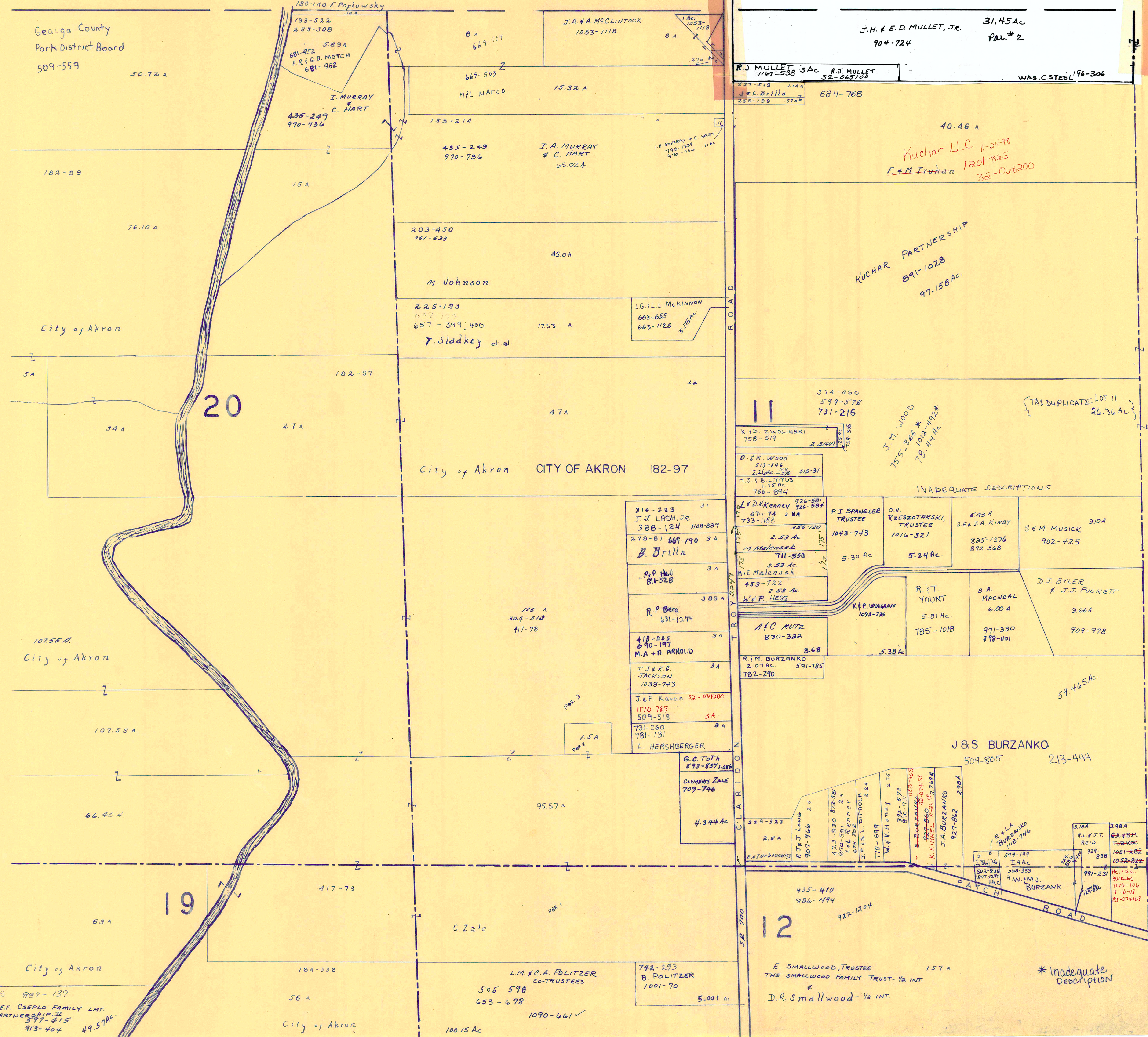
22

T ROY TWP

THE R.F. CSEPEL FAMILY
LMT PARTNERSHIP II
FRONTAGE 908.5'
NOW 401.9'
59 A 49.57 A 713.9 A

BURTON

TOWNSHIP



SS 887-139
 THE E.F. CSEPLÓ FAMILY LMT.
 PARTNERSHIP, II
 377-415
 913-404 49.57Ac

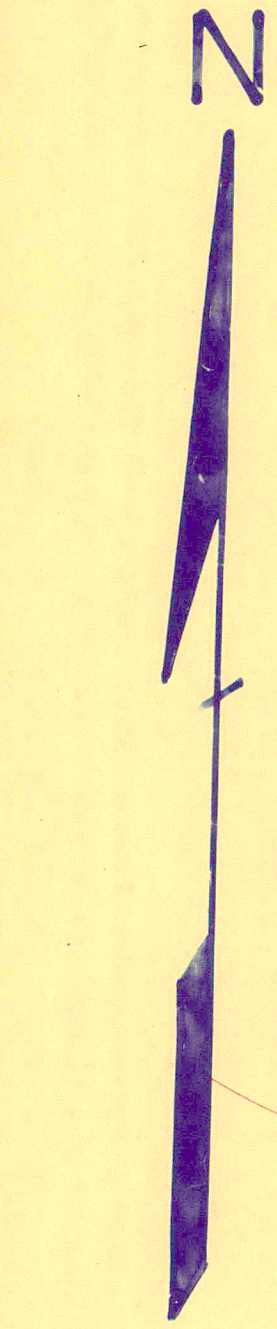
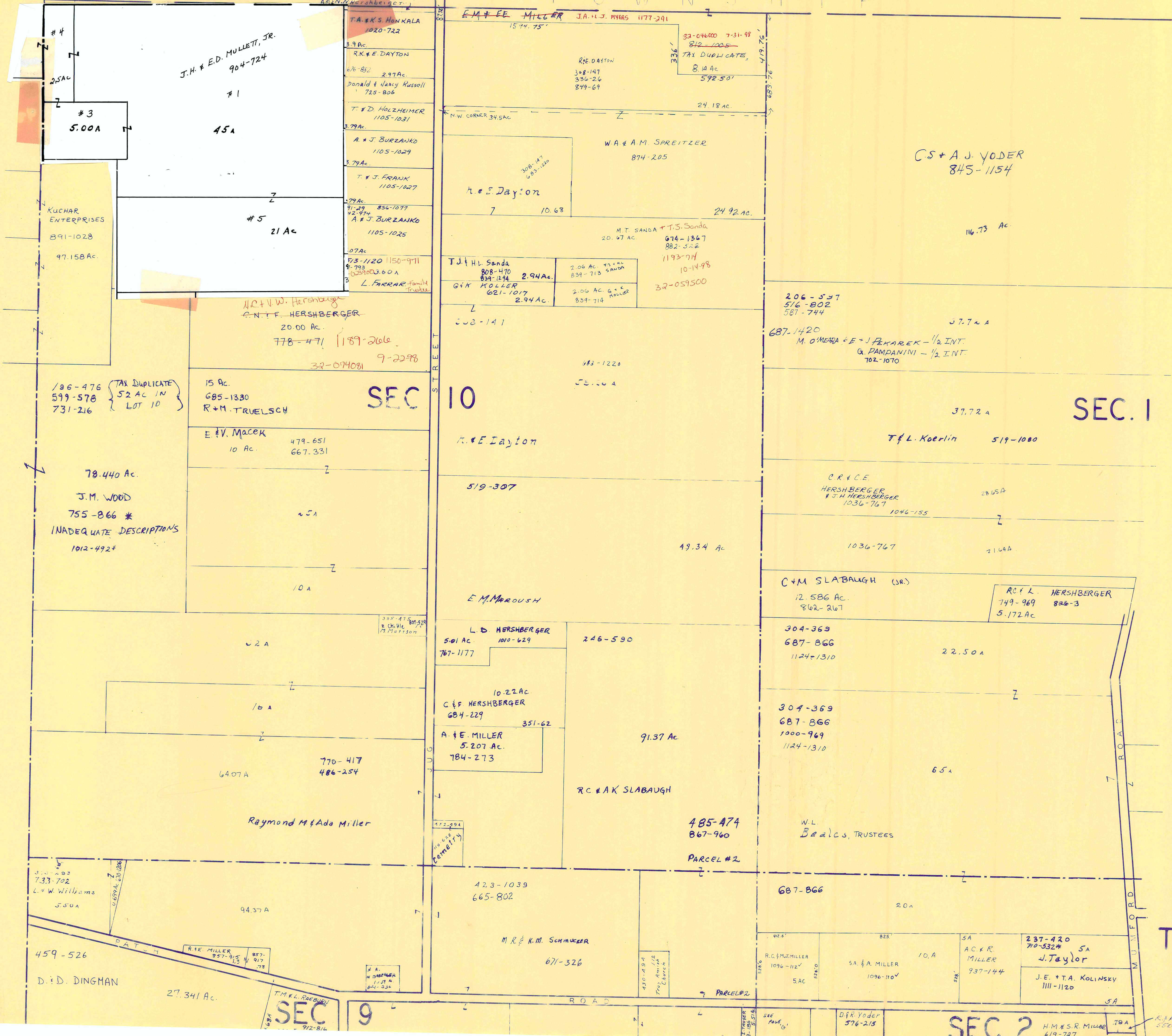
SCALE 1" = 300'
 JANUARY 1, 1998
 RELATIVE REPRESENTATION

A	B	C	D
E	F	G	H
I	J	K	L
M	N	O	P

TROY TWT

045 007

BURTON TOWNSHIP



SCALE 1" = 300'

JAN. 1, 1998

A	B	C	D
E	F	G	H
I	J	K	L
M	N	O	P

TROY TWP

RELATIVE REPRESENTATION
* Inadequate Description

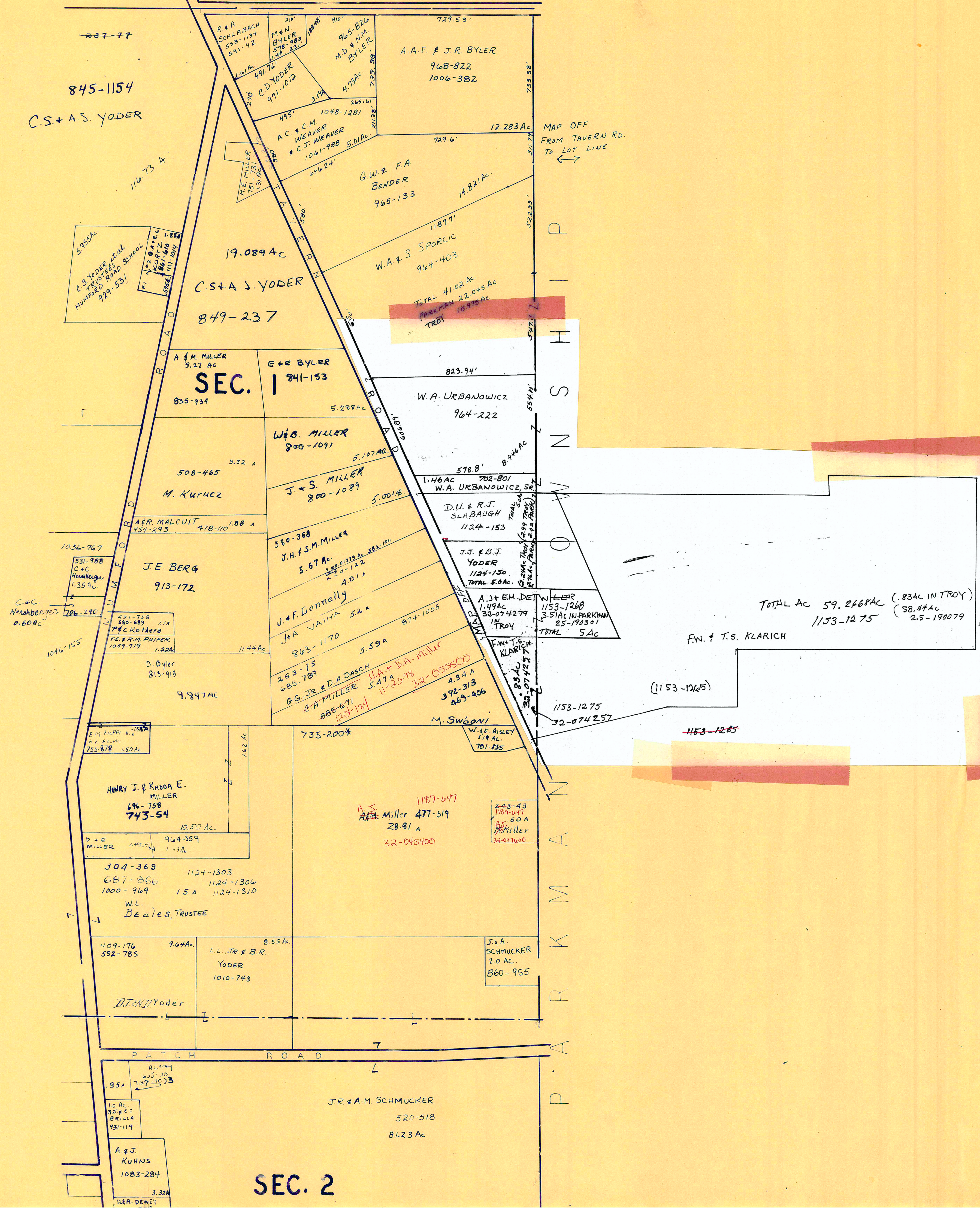
SEC 10

SEC. 1

SEC 2

SEC 9

BURTON TOWNSHIP



SCALE 1" = 300'

JANUARY 4, 1978
RELATIVE REPRESENTATION

*Inadequate Description

A	B	C	D
E	F	G	H
I	J	K	L
M	N	O	P

SEC. 2

T ROY TWP

THE E.F. CSEPELO FAMILY
LMT. PARTNERSHIP II
550-325

889-139
913-404 49.57Ac.

182-102

100 A

City of Akron

182-101

126 A

SEC. 19

City of Akron

City of Akron

170-392

126

City of Akron

443-711

City of Akron

SEC. 18

The City of Akron
810-1246
810-1265

26 Ac.

731-680
2.00 Ac.
A. BEKETE
W. REEVE
88-243 591'

SHANDOR GARDENS, INC.
942-398
942-401
942-404
12.57 A.

56 A

184-338

100 A

184-339

69.50 Ac

City of Akron

184-339
46.0 Ac

City of Akron

1039'

49.43 Ac

2100.31'

City of AKRON
663-483

37.82 Ac

FOXGEN
922-850

50 A

PAUL LEUTY

parcel #3

25.90 Ac

ENOS A. & MARY J. Detweiler

18.31 Ac.

TROY HILL RANGE, LTD.
1068-52

35.54 Ac

ST. ASSOC.
107-842

L.M.C.A. POLITZER
CO-TRUSTEES
1090-661
653-678

L.M.C.A. POLITZER
CO-TRUSTEES
7.003 Ac
T.D. POLITZER
1090-661
653-678
93.06
100-15 Ac
1155-403
1143-842
32-074277

L.M.C.A. POLITZER
CO-TRUSTEES

1090-661
653-678

SEC. 12

W. U. Reid

111-769
574-456

8.50 A

20 A

186-17
1.5 A
City of Akron

922-1204

E. SMALLWOOD, TRUSTEE
THE SMALLWOOD FAMILY TRUST - 1/2 INT.

D.R. Smallwood - 1/2 INT

435-410
826-494

157

434-38
571-801
12 A

574-69
576-975

694-642
K. Russell } TRUSTEES
D. K. O'REILLY } 661-562

5.0 Ac.
762-667
K. RUSSELL +
D. O'REILLY

454-34
574-69
576-972
576-975

661-884
672-804

53 A

K. Russell } 694-642
D. K. O'REILLY } 761-454

454-36
574-69
576-972
576-975

661-884
672-804

761-454

87.0 Ac.

K. Russell } 694-642
D. K. O'REILLY }

732-38
887-519

10.38 A

218-594
887-517

193-439

229-310
306-194
731-1162

SEC. 13

J.F. & T.A.
ZIEGLER
1011-632

F.T. ASSOC.
843-842
13.76 Ac

477-621
R. Hurd, Jr. &
FRIEDA G. HURD

21.60 A

21.55 A

L. Hurd

T. Dizak

SEE DETAIL 16

See 16

N

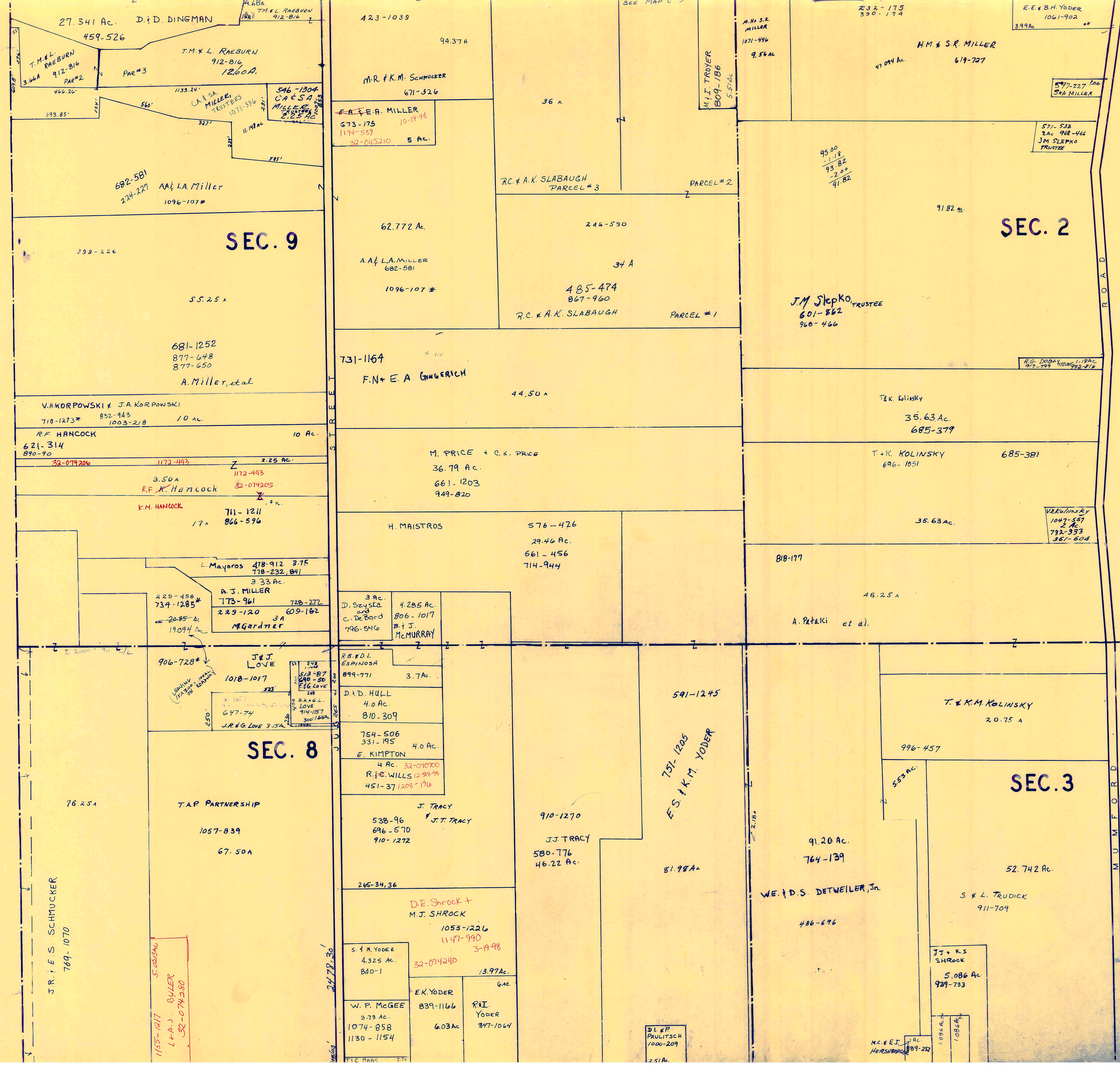
SCALE 1" = 300'

JAN 1, 1998

A	B	C	D
E	F	G	H
I	J	K	L
M	N	O	P

TROY TWP

RELATIVE REPRESENTATION
* Inadequate description



SEC. 9

SEC. 8

SEC. 2

SEC. 3

SCALE 1"=300'

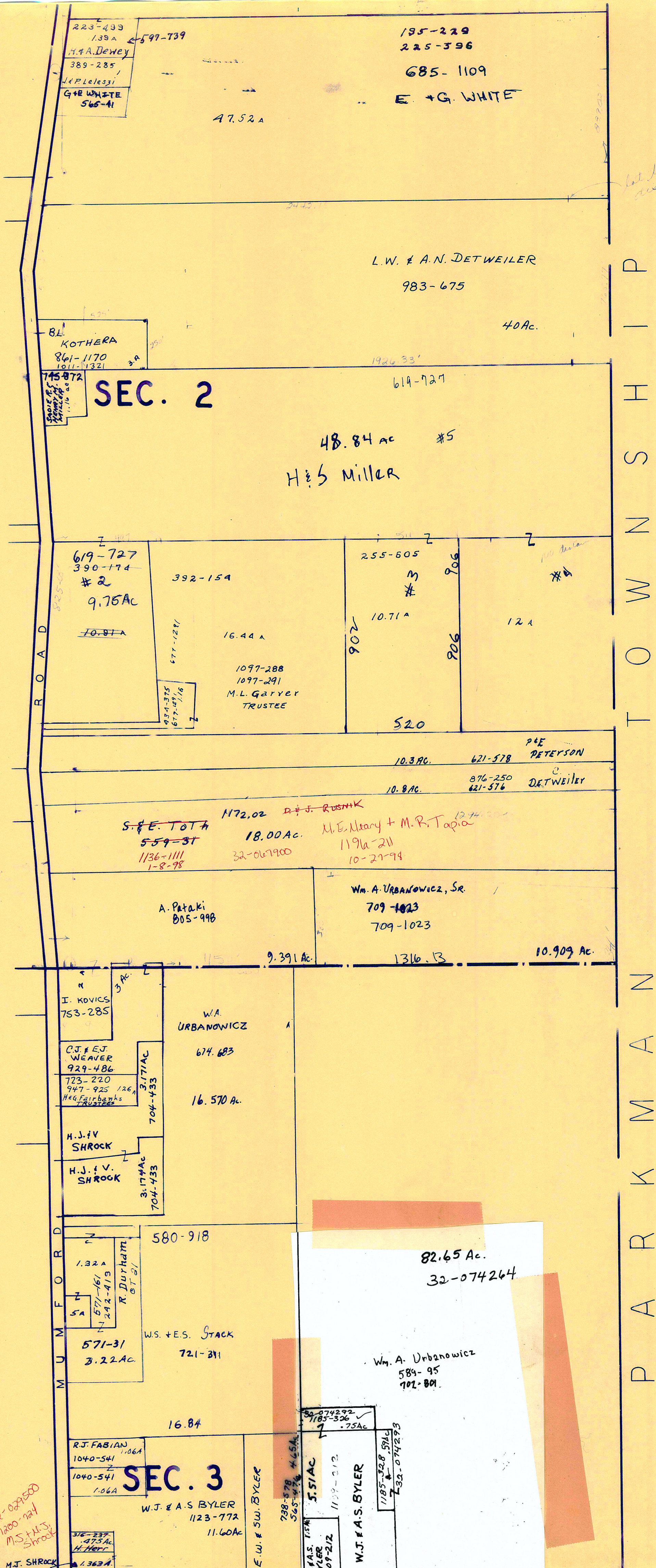
JAN. 1, 1998

A	B	C	D
E	F	G	H
I	J	K	L
M	N	O	P

TROY TWP.

RELATIVE REPRESENTATION

* Inadequate Description



SCALE 1"=300'

JAN. 1, 1998

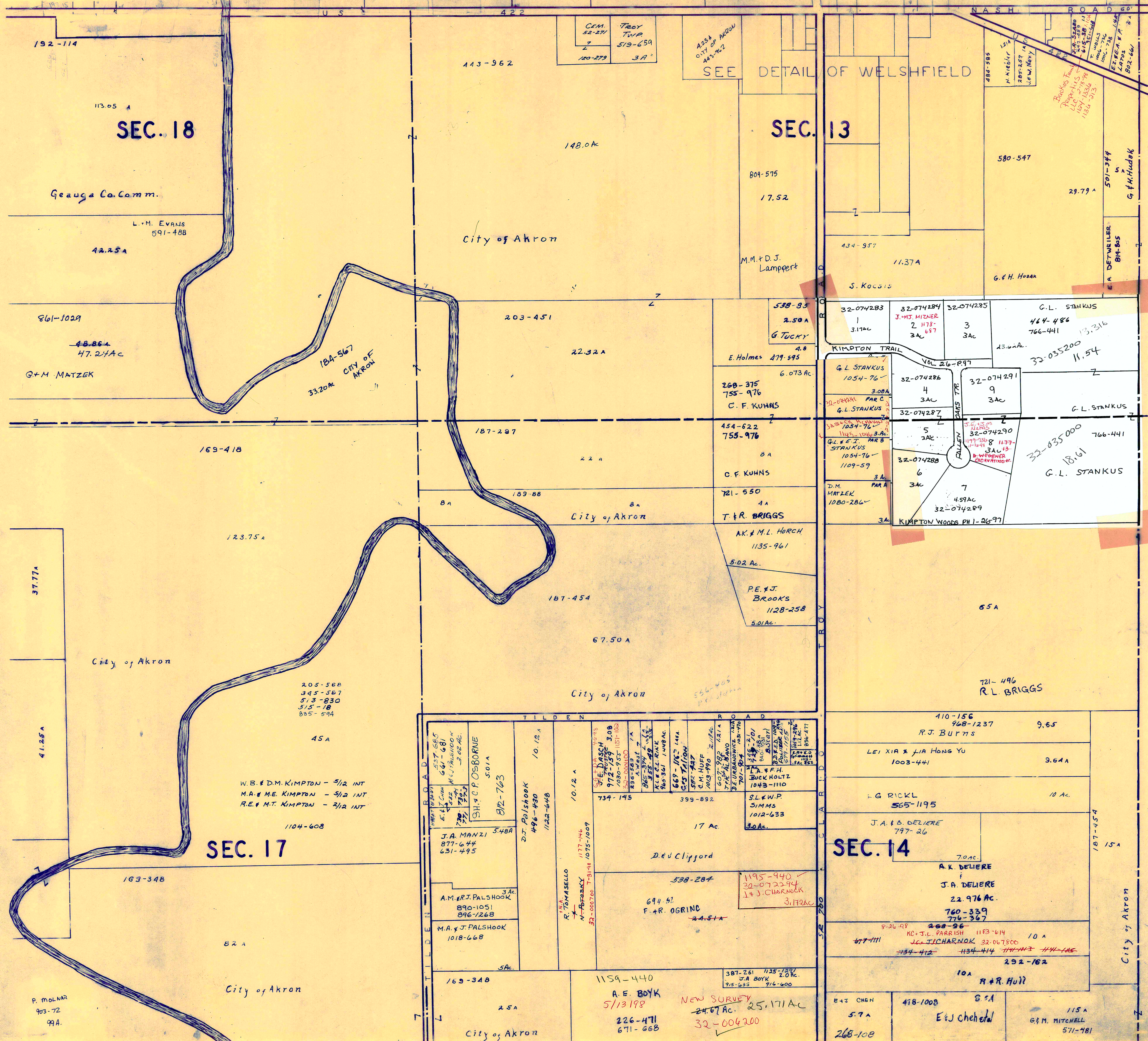
A	B	C	D
E	F	G	H
I	J	K	L
M	N	O	P

TROY TWP.

RELATIVE REPRESENTATION

*Inadequate Description

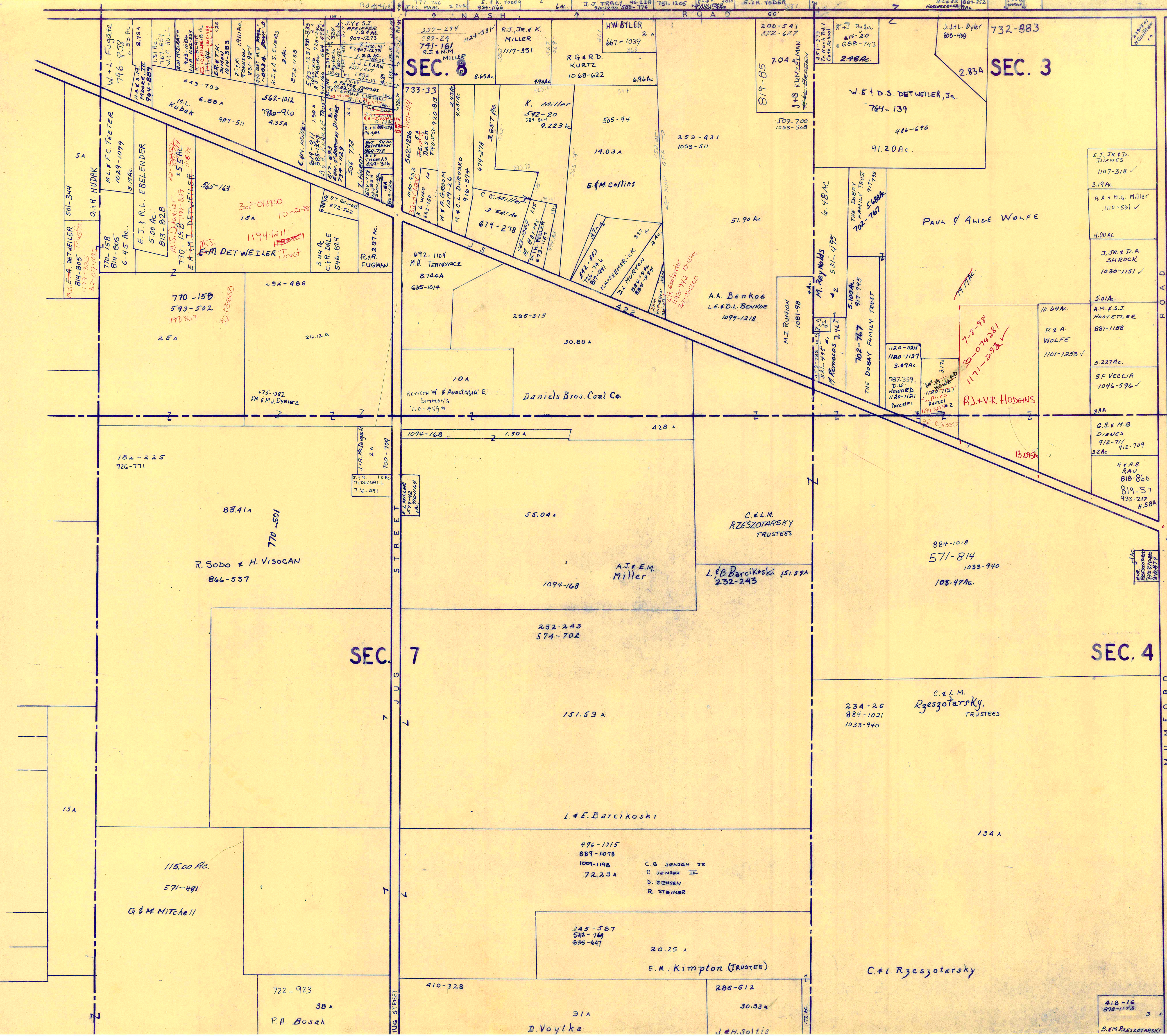
22-028500
 1200' natl
 M.S.H.S.
 Shrock



SCALE 1" = 300'
 JAN. 1, 1998

A	B	C	D
E	F	G	H
I	J	K	L
M	N	O	P

TROY TWP.
 RELATIVE REPRESENTATION
 * Inadequate Description



SCALE 1"=300'

JAN. 1, 1998

A	B	C	D
E	F	G	H
I	J	K	L
M	N	O	P

RELATIVE REPRESENTATION
*INADEQUATE DESCRIPTION

TROY TWP

418-16
818-1173
3 A
B.E.M. RZESZOTARSKY

C.L.M. Rzeszotarsky

E.M. Kimplon (TRUSTEE)

D. Voytko

722-923
38 A
P.A. Busak

115.00 Ac.
571-481
G.M. Mitchell

234-26
887-1021
1033-940
C.L.M. Rzeszotarsky TRUSTEES

L.B. Barcikowski 151.59A
232-243
574-702

A.J. & E.M. Miller

55.04 A

1094-168 1.50 A

10A
KEMENY & ANASTASIA E. SUMMERS
710-459 A
Daniel Bros. Coal Co.

770-150
593-502
1199-829
25 A

R. Sodo & H. Visocan
866-537

7-8-98
33-074281
1171-292
R.J. & V.R. HODGINS

PAUL & ALICE WOLFE

A.A. Benkoe
L.E. & D.L. BENKOE
1099-1218

C.O. Miller
3.54 Ac.
674-278

K. Miller
542-20
584 S.W.
9.223 Ac.

SEC. 8

SEC. 3

SEC. 7

SEC. 4

5A
501-344
E.A. DETWEILER
B.H. & B.O.S. TRUSTEE
1199-335
32-074095

5A
500 Ac.
E.J. & R.L. EBELENDER
813-828

5A
500 Ac.
E.J. & R.L. EBELENDER
813-828

5A
500 Ac.
E.J. & R.L. EBELENDER
813-828

5A
500 Ac.
E.J. & R.L. EBELENDER
813-828

5A
500 Ac.
E.J. & R.L. EBELENDER
813-828

5A
500 Ac.
E.J. & R.L. EBELENDER
813-828

5A
500 Ac.
E.J. & R.L. EBELENDER
813-828

5A
500 Ac.
E.J. & R.L. EBELENDER
813-828

5A
500 Ac.
E.J. & R.L. EBELENDER
813-828

5A
500 Ac.
E.J. & R.L. EBELENDER
813-828

5A
500 Ac.
E.J. & R.L. EBELENDER
813-828

5A
500 Ac.
E.J. & R.L. EBELENDER
813-828

5A
500 Ac.
E.J. & R.L. EBELENDER
813-828

5A
500 Ac.
E.J. & R.L. EBELENDER
813-828

5A
500 Ac.
E.J. & R.L. EBELENDER
813-828

5A
500 Ac.
E.J. & R.L. EBELENDER
813-828

5A
500 Ac.
E.J. & R.L. EBELENDER
813-828

5A
500 Ac.
E.J. & R.L. EBELENDER
813-828

5A
500 Ac.
E.J. & R.L. EBELENDER
813-828

5A
500 Ac.
E.J. & R.L. EBELENDER
813-828

5A
500 Ac.
E.J. & R.L. EBELENDER
813-828

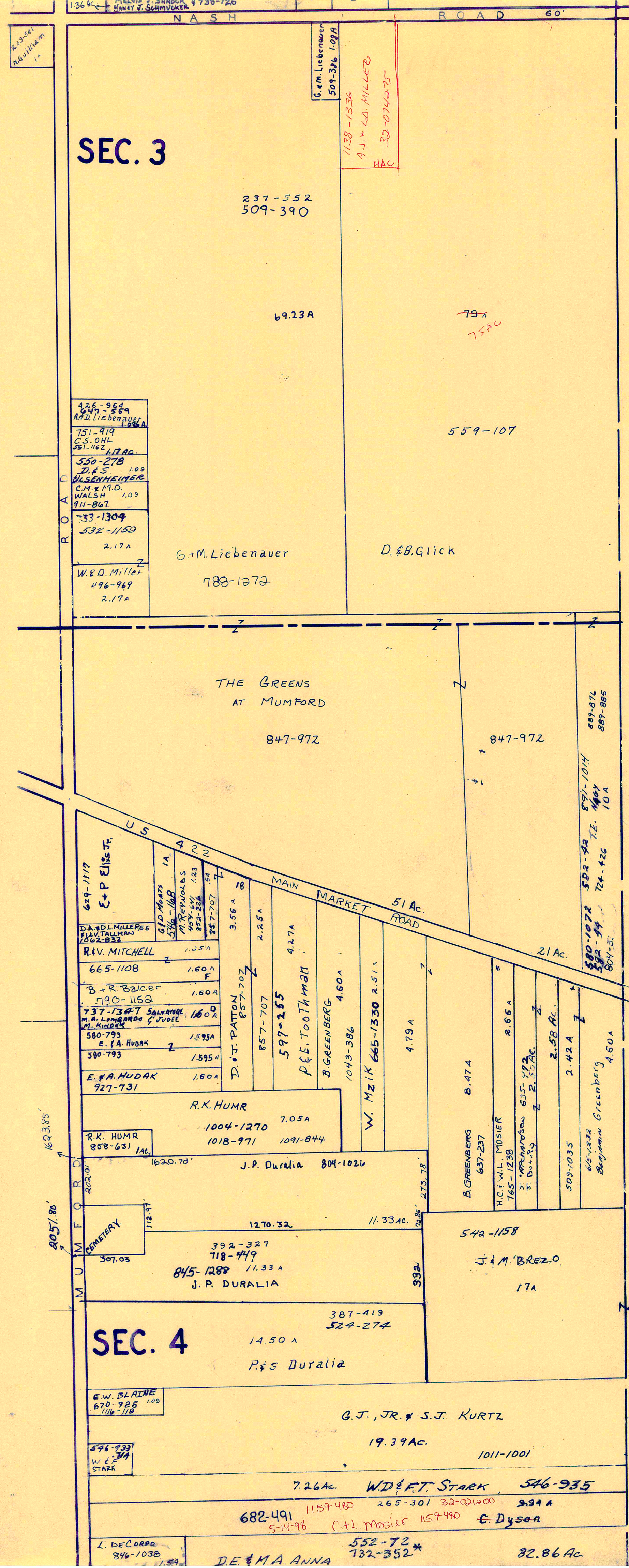
5A
500 Ac.
E.J. & R.L. EBELENDER
813-828

5A
500 Ac.
E.J. & R.L. EBELENDER
813-828

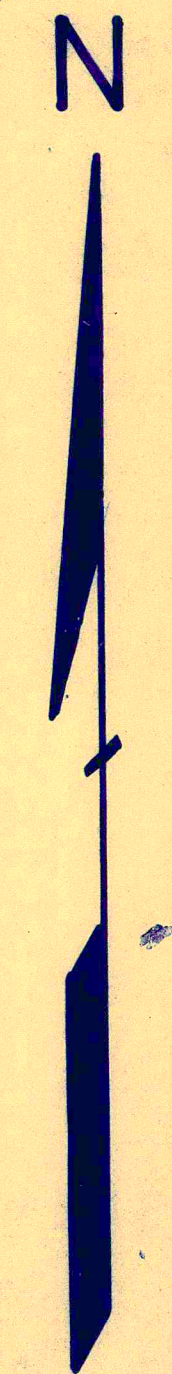
5A
500 Ac.
E.J. & R.L. EBELENDER
813-828

5A
500 Ac.
E.J. & R.L. EBELENDER
813-828

5A
500 Ac.
E.J. & R.L. EBELENDER
813-828



P A R K M A N T O W N S H I P



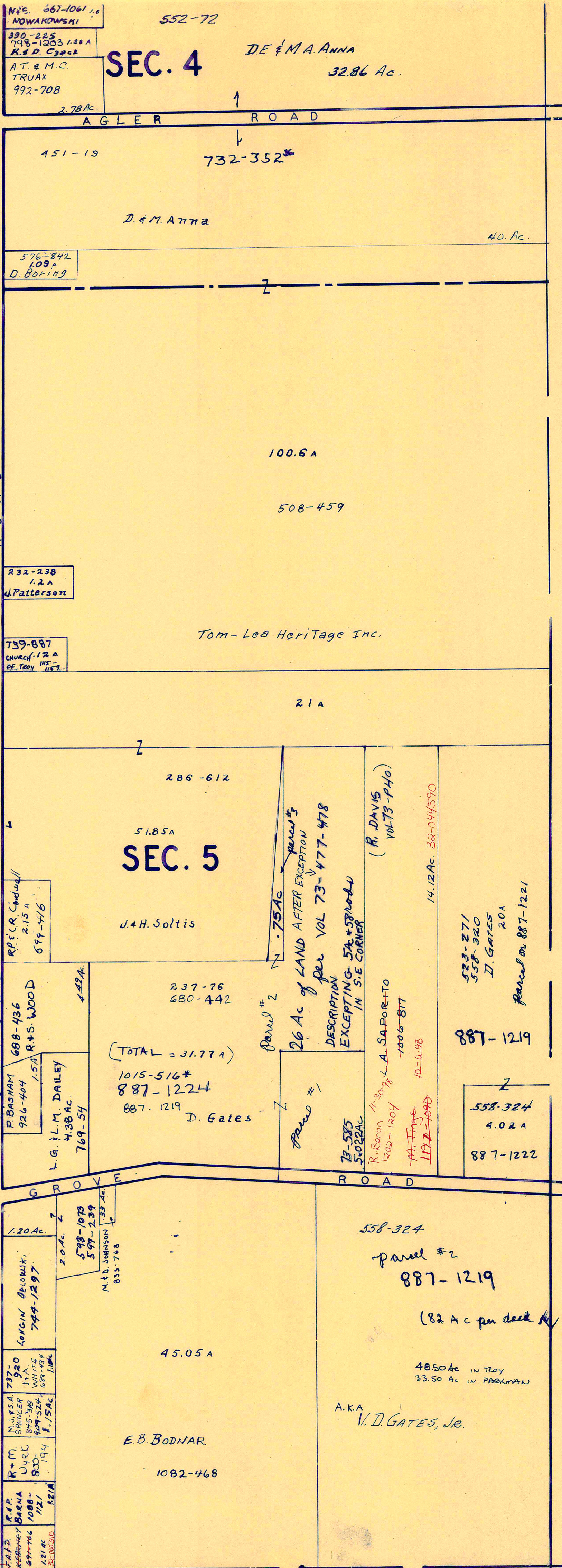
SCALE 1" = 300'

JAN. 1, 1998,
RELATIVE REPRESENTATION

A	B	C	D
E	F	G	H
I	J	K	L
M	N	O	P

*INADEQUATE DESCRIPTION

TROY TWP



795-1090
C. FLEGER
R.P. & B.S. Myers
1147-081
378-98
32-088550

A.P. C. 22
158000

T O W N S H I P
P A R K M A N
4 0 N
1 2 W



SCALE: 1" = 300'

JANUARY 1, 1998
RELATIVE REPRESENTATION

A	B	C	D
E	F	G	H
I	J	K	L
M	N	O	P

TROY TWP

* Inadequate Description

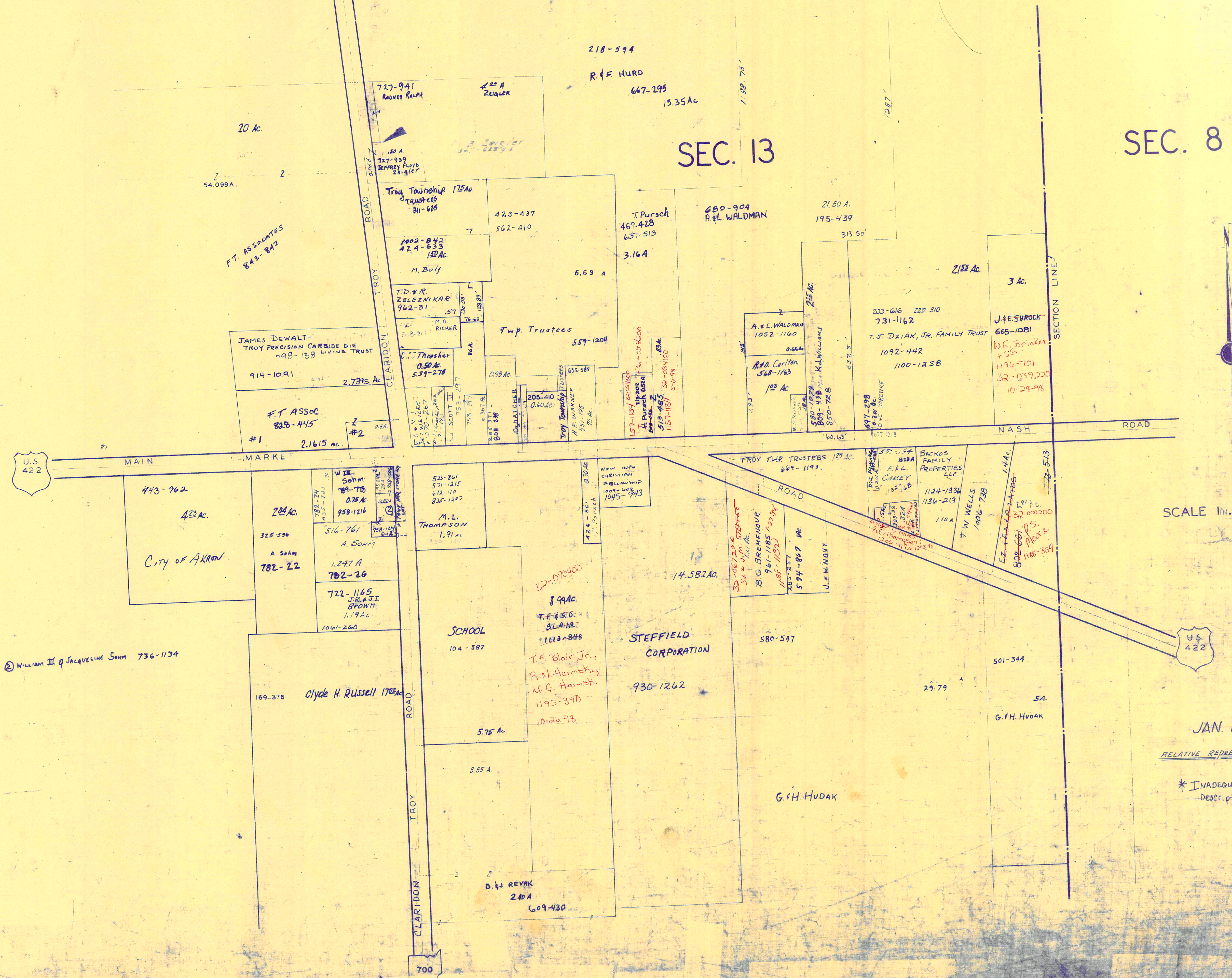
WELSHFIELD SEC.13

TROY TP.

WELSHFIELD SEC.13

TROY

1991



SEC. 8

SEC. 13

SCALE 1 in. = 25 ch. = 165 ft.

JAN. 1, 1998

RELATIVE REPRESENTATION

* INADEQUATE Description

16 Q